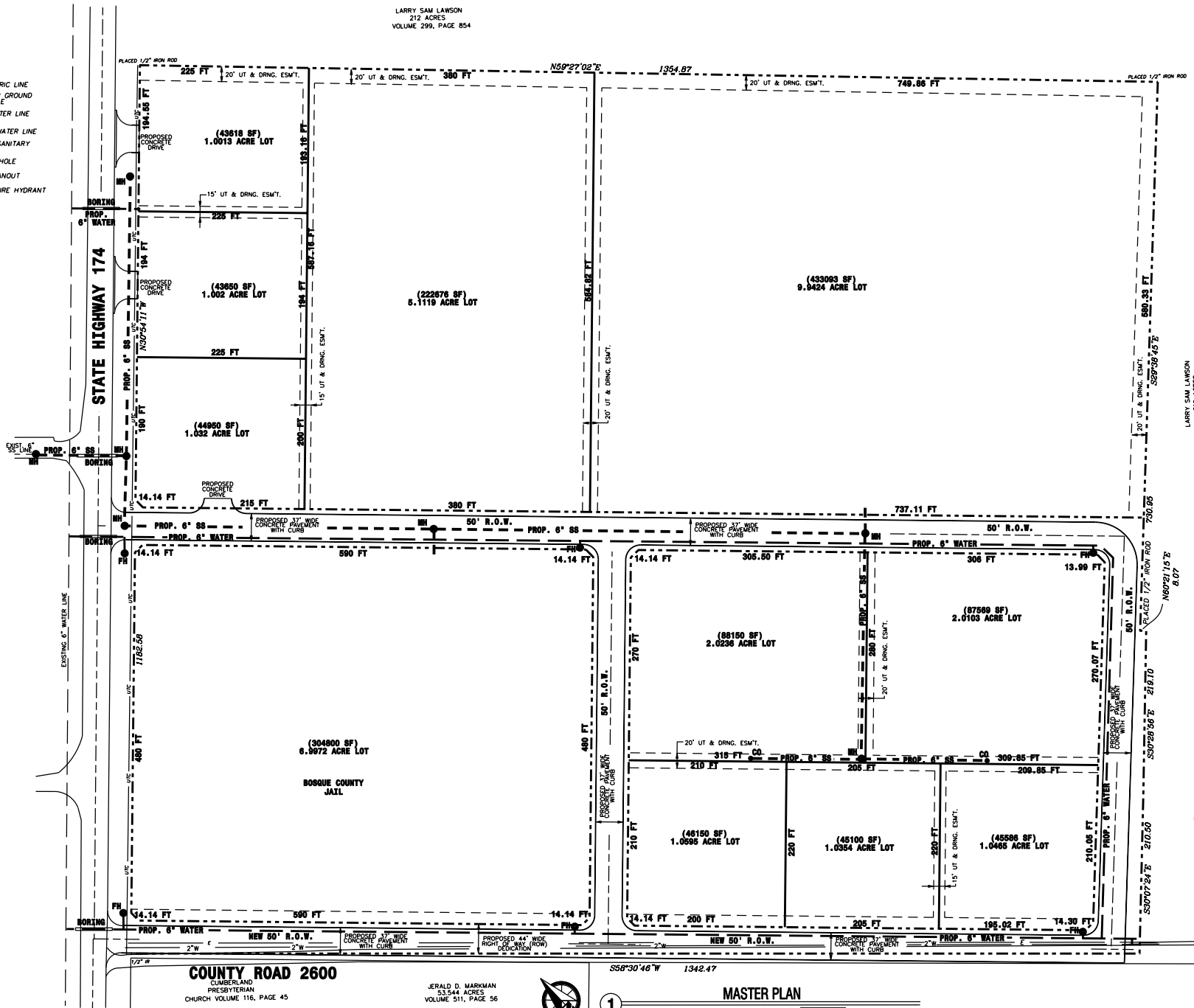


LEGEND

- E — EXISTING ELECTRIC LINE
- UTC — EXISTING UNDER GROUND TELEPHONE CABLE
- 2"W — EXISTING 2" WATER LINE
- — PROPOSED 6" WATER LINE
- — PROPOSED 6" SANITARY SEWER LINE
- MH — PROPOSED MANHOLE
- CO — PROPOSED CLEANOUT
- FH — PROPOSED 6" FIRE HYDRANT



LARRY SAM LAWSON
212 ACRES
VOLUME 299, PAGE 854

LARRY SAM LAWSON
212 ACRES
VOLUME 299, PAGE 854

M. KING SURVEY ABSTRACT NO. 450

GARY LEE ALLEN
AND
DANIELA M. ALLEN
0.72 ACRES SECOND TRACT
VOLUME 603, PAGE 394

COUNTY ROAD 2600
CUMBERLAND
PRESBYTERIAN
CHURCH VOLUME 116, PAGE 45

GERALD D. MARKMAN
53.544 ACRES
VOLUME 511, PAGE 56



S56°30'46" W 1342.47

MASTER PLAN

1" = 60'
0 60'

MOR'S
MOR'S ENGINEERING, INC.
Engineering • Planning • Construction
2412 West Loop South, Suite 200
Houston, Texas 77025
PH: (713) 241-1100
FAX: (713) 241-1101
WWW.MORS-ENG.COM

CLIENT / PROJECT NAME:

MERIDIAN BUSINESS AND INDUSTRIAL PARK

MERIDIAN DEVELOPMENT INC.

MERIDIAN TEXAS

SEALS / CONSULTANTS:

THESE DOCUMENTS ARE FOR REVIEW ONLY, AND ARE NOT INTENDED FOR BIDDING, PERMITTING OR CONSTRUCTION PURPOSES.
ENGINEER:
MORI AHAMIAN, P.E., SIT,
MOR'S ENGINEERING INC.

PROJECT NUMBER:

106

ISSUE DATE:

JUNE 2010

REVISIONS:

SHEET NAME:

MASTER PLAN

SHEET NUMBER:

C1