



COMMUNITY PROFILE
CITY of MERIDIAN TEXAS

DEVELOPED BY
MERIDIAN ECONOMIC DEVELOPMENT CORPORATION

Version 2- Release 1d
June 1, 2011



TABLE OF CONTENTS

1. Executive Overview	1
2. Detail Assessment Information	
a. Climate and Geography	3
b. Demographics	3
c. City Government	4
d. State and Local Tax	5
e. Local Housing Availability, Opportunity and Cost	5
f. Personal Safety, Security and Crime Statistics	6
g. Employment Opportunities	6
h. Health Care Services	7
i. Emergency Medical Services	8
j. Public Transportation	8
k. Major Highways / Airports	8
l. College Level Education Opportunities	9
m. Retired Military Support	9
n. Leisure Living	10
o. Community Support	11
p. Senior Citizen Support	11
q. Recreational Areas and Facilities	12
r. Performing Arts	13
s. Festivals and Events	13
t. Volunteerism	15
u. Sports (all levels)	16
v. Churches	16
w. Public Schools	16
x. Banking	17
y. Utility Services	17
z. Websites of Interest	19
3. Summary	20
4. Appendices	
a. Appendix A: Brief History of Meridian	
b. Appendix B: Business Community Makeup	
c. Appendix C: Maps	

Executive Overview:

The purpose of this document is to present to those who are interested in Meridian Texas, a look at the services, activities and capabilities of the town in so far as they can affect quality of life.

Some of the elements of a quality life are the same for most everyone: safety, housing, medical care, intellectual stimulation and entertainment to name a few. We, all being unique individuals, measure differently what, beyond the basics determine quality in our lives. For some demographics are important, for others taxes, employment and educational opportunities are key. For others it may be transportation, opportunities to attend public events or going to dinner are important.

Understanding a town requires knowing the character of the people but it also requires knowledge of what is available to the people. What we will look at here are those things that when present in any town or city, affect life in that town or city. These are all elements capable of affecting a person's "hierarchy of need". Food, clothing and shelter can be found in most towns but "self-actualization", well that's a little harder to find. This document looks at a large number of these opportunities, opening them to examination and giving a clearer picture of Meridian.

Meridian Texas is a typical Texas small town with an estimated 2010 population of something over 1525. Like most of the small towns in rural Texas today, Meridian started with just a few buildings and not many more people. The town grew larger over the next 80 some years, one of the many stories it shares. Then with the coming of the Great Depression, the businesses began to close and the population moved away. Many of these towns died but some of them recovered partially only to shrink again with the coming of the modern highway system. Just as it did then, Meridian still depends heavily on agriculture for its livelihood.

Meridian, by fate is in a unique geographic location. It sits between the Dallas-Fort Worth (66 miles) and Austin (127 miles) metropolitan areas, a comfortable weekend driving distance from both. Many of the people who live in those areas will in time find that Meridian and the area around it an ideal place to visit for a weekend. The weekend visits will lead to a determination that it's an ideal place to purchase land for that hide away for long weekends and from that, the lucky ones, a place to live permanently.

The geographical setting is what people first notice and what gives them reason to pause. They explore the area and learn that the nature and character of its people are even more attention getting. Combine these things with those elements listed on the following pages and you'll quickly realize that Meridian is really a great place to live. It is not

Community Profile – City of Meridian, Texas

unusual for people that travel through the town to call back to the Chamber of Commerce when they get home to find out more about what they've seen because they know they want to come back and see more of it. Some of the residents, with no prior ties to Meridian have after careful study of many locations, selected Meridian as the place for their retirement home.

The opportunities to live a good life, to experience a slow pace with good people, to become more involved in their town than ever before; if those are the things that count then Meridian Texas is a rich little town.

Climate and Geography:

Meridian’s branding is “Top of the Hill Country”. Those words project an image of an area of rolling moderately tree covered hills with sharp cedar covered mesas that dominate the lower ground. That is exactly the geography of the area around Meridian.

Meridian, on high ground east of the Bosque River and near the center of the county, sits at the bottom of a wide river valley, cut over time as the river flowed through Central Texas.

The climate is mild in winter (55 degrees) and hot in the summer (95 - 100 degrees). Some years the rains are good (35”), some years are not good (25”) then there are the “drought years” when there is little rain (12” - 18”). Statistically the hottest month (95 – 100+) is July (sometimes August), the coldest month is January (45 with nights into the 20’s) and the wettest is May with 4”+ (sometimes March).

Demographics:

Population:

Male	46%
Female	53%
Under 20	32%
Between 20 and 60	44%
Over 60	24%
Caucasian	83% (23% are Latino)
Non-Caucasian	5%
Married	56%
Widowed	13%
Not married	20%

Population 25 and older:

High school graduate	71%
Attended college	58%
Hold graduate or professional degree	9%
Bachelor’s degree	12%
Associates degree	7%

Annual household income (median family income is \$40,000):

over \$100,000	2.9%
\$75,000 - \$100,000	6.4%
\$50,000 - \$75,000	17.1%
\$35,000 - \$50,000	21.9%
\$15,000 - \$35,000	28.3%
below \$15,000	23.5%

Statistics from US Census Bureau – 2009. As soon as the 2010 data is available this section will be updated.

City Government:

Meridian is a “general law” city. This means that state statutes prescribe the powers and duties of the city, not a city charter. The city does still enact ordinances but only in areas authorized by the legislature.

Meridian operates under the mayor – council form of government. The city council consists of five members and the mayor. All are elected to two year terms, three members terms expire one year and two plus the mayor the next year.

The mayor is the key to city government and is looked to for the leadership that is necessary to meet the needs of its citizen’s, take care of the requirements of the town and for an effective City Council. The mayor presides at council meetings but has a vote only when a tie exists within the council vote. The mayor is the public face of the city.

The day to day operation of the city is vested in the City Administrator. This position reports directly to the mayor and indirectly to the City Council. The person in this position is responsible for carrying out the directions of the mayor, executing the policies and decisions of the city council and the operation of city hall.

The City Secretary, under the direction of the City Manager, is the Custodian of Records for the City of Meridian including City Council minutes, ordinances, resolutions, proclamations, contracts, deeds and easements. The office prepares agendas for meetings of the City Council, Meridian Planning & Zoning Commission and Building & Standards Commission meetings. The City Secretary also serves as clerk of the Municipal Court.

Meridian residents, in the past year, have approved alcoholic beverage sales with the city limits.

The City of Meridian website contains a vast amount of information and is found at www.meridiantexas.us.

State and Local Tax Structure:

Meridian residents are subject to a favorable tax structure with no state or local income tax, a sales tax rate that is on the same level with other cities and property taxes that are below state averages.

Sales Tax Rate is 8.25%

Property Tax Rates (per \$100 value) for 2010:

City of Meridian	\$0.4787
Bosque County Tax Rate	0.4150
Meridian ISD Tax Rate	1.3660
Middle Trinity Groundwater Rate	0.0150
Total Effective Tax Rate	\$2.2747

Total Effective Tax Rates for the prior five years (per \$100 value):

2005	2006	2007	2008	2009
2.2696	2.4377	2.1265	2.1794	2.1787

The school district grants a Homestead Exemption (\$25,000) and the City and County grant an exemption for those over age 65 (\$10,000). The valuation of all property becomes fixed the year after the owner turns 65.

Local Housing Availability, Opportunity and Costs:

With the exception of the publicly owned multiple unit housing, properties in Meridian are almost entirely single family units built before 1980 and costing less than \$100,000. The few properties built within the last year were in the \$150,000 range.

Existing homes are the dominate seller. Overall more properties have become available in Meridian in 2010 with property values remaining steady. Homes available for sale are mostly in the \$85,000 - \$125,000 range. The market demand is for homes costing \$50,000 or less but few are available.

Rental properties are in significant demand in Meridian; however because of limited availability it is difficult to find a rental. Single family dwellings are the predominant rental unit, very few multi-family dwellings (apartments) exist and few of either are available. Rents are generally in the \$400 to \$600 range.

Meridian is working to address their housing issues by both the public and private sectors of the community.

Personal Safety, Security and Crime Statistics

Meridian is served by a two man police force. The department is headed by a chief, who also performs patrol duty, and one patrolman. Both officers are highly experienced in small town policing, meet all state specified training and are certified police officers. Both officers work planned shifts and are on call 24 x 7. The county sheriff's deputies are also available when a situation dictates.

There are few offenses in Meridian and almost no serious crimes. The rate of serious crime in Meridian is below the state average. Theft and public disorder remain the most prevalent offenses. Drug possession offenses are not often encountered.

The Crime Index rating in Meridian year after year has been 0.0 because there are too few crimes to calculate an index.

Employment Opportunities:

There are few businesses in the Meridian area who employ large numbers of people. Those that do find that the majority of their employees live in the other small towns, some which are up to 40 miles away.

Small local business and government provide most of the available employment opportunities. Meridian also has a number of small professional businesses that like our retail stores employ as few as two people. Most retail businesses employ less than five people.

The Meridian workforce is predominantly young workers with minimum skills and is near fully utilized. Most skilled workers are older and are either self employed or are employed by businesses in places other than Meridian.

Of those employed, they work mostly in sales, management, construction, production or as professionals. Almost all work as private wage and salary workers. Bosque County is the largest government employer with a few more people working for state and federal agencies with offices in Meridian.

Health Care Services

Within Meridian:

The Meridian Manor care center offering the following services:

Retirement Center – independent retirement living apartments

Nursing Center – quality of life nursing care for those who can no longer care for themselves

Temporary Care – physical and occupational therapy, speech therapy and after hospitalization care

Meridian is served by a full service pharmacy.

Meridian also hosts a dental office with 2 dentists.

Located 13 miles away in Clifton:

The following newly constructed / remodeled major medical facilities consist of:

Medical Clinic
Fully equipped / staffed hospital
Fully equipped / staffed emergency room
Home Health Agency
Nursing Facility

Within forty-five miles of Meridian are numerous doctors and dentist along with first class medical treatment facilities all of which are currently used by the residents of Meridian:

Hillcrest Baptist Medical Center – Waco
Lake Whitney Medical Center – Lake Whitney
VA Medical Center – Waco
Glen Rose Medical Center – Glen Rose
Hill Regional Hospital - Hillsboro
Providence Medical System - Waco
Scott and White – Waco

Emergency Medical Services

Bosque County EMS provides emergency medical service to the residents of Meridian from a multi ambulance facility in the city that is staffed 24 x 7 with trained and certified technicians. A back-up facility is located 13 miles away in Clifton.

Air ambulance service is available from both Air Evac Lifeteam and CareFlite from their bases, one as close as 35 miles from of Meridian.

Public Transportation:

Meridian’s public transportation needs are served by Bosque County Transit which provides a six bus transportation system within Meridian and to medical facilities in Waco and Temple.

Inside Meridian the buses are available for call ahead scheduling of rides to / from local shopping locations, doctor’s office, grocery store, banks, the senior center and others. Tuesday is the traditional shopping day.

Medical trips to Waco are scheduled six times a month and twice to Temple. These out of town medical trips have a schedule which allows the bus to return those same individuals to Meridian the same day.

Major Highways / Airports:

Highway access:

Four highways intersect inside the City of Meridian, providing access from all directions. The State highways are Texas 6, 22, 174 and 144. During an “average 24 hour day”, over 19,900 vehicles pass through the intersection of highways 6 and 22 and over 13,400 vehicles pass through downtown.

Interstate highways system is easily accessed:

I-20 is 84.7 miles northwest – Eastland, or
66.3 miles north – Ft. Worth
I-35 is 37.3 miles east – Hillsboro, or
47.3 miles southeast - Waco

Airport Access:

Airports and their service are within a short drive:

Clifton Municipal – 10 miles w/FBO
14/32 (3000x50, 13.000 lbs)

Cleburne Municipal – 25 miles w/FBO
15/33 (5697x100, 30.000 lbs.)

Waco Regional – 47 miles w/FBO, w/airline service
01/19 (6596x150 82,000 lbs)
14/32 (5896x150 82,000 lbs)

College Level Education Opportunities:

Hill College – Meridian offers day and evening general education classes which change each semester and technical training classes, currently beginning and advanced welding (leading to certification) to all who choose to attend.

High schools in the county are transporting their students to the campus so that they may complete college credits while earning their diplomas. Enrollment for last year was just short of 80 students.

For more advanced students, Hill College in Hillsboro (40 miles) offers several full two year programs, Tarleton State University in Stephenville (42 miles) and Baylor University in Waco (45 miles) both offer full four year programs in a number of areas of study.

Retired Military Support:

Meridian is a great place for retired military personnel. Not only because it's a great place for them to live but because the retiree will find that in Meridian they are a short drive (about 80 miles either way) between the largest military base in the United States, Fort Hood and the Joint Reserve Base in Fort Worth. Both facilities offer retirees support.

In addition, those military retirees with disabilities or who have other VA supported needs find that support at either the major VA hospitals in Waco (45 miles) or in Temple (65 miles).

Leisure Living:

Meridian has its own 9 hole golf course which is rated among the best in Texas. Several larger courses are within 40 miles. Lake fishing is available at a small lake (Meridian State Park) within 2 miles and with a very large lake (Lake Whitney) within 30 miles. Seasonal game bird, water fowl and game animal hunting opportunities including Trophy Hunts surround Meridian on public and private land.

Meridian has a library that is the envy of other small towns. As well as being used daily by the adult citizens of the area, it is visited daily by students from all over the northern part of Bosque County. Many users are there for Internet access.

The Bosque County Collection, a historical archive, is located in Meridian and is operated by the Bosque County Historical Commission as a research center for local history.

Visiting a good restaurant requires only a local drive or a maximum of about 45 miles. Selecting from the many and varied restaurants available depends on what your taste buds demand more than anything else. Meridian hosts a well known and respected restaurant featuring a first class European menu. A national sandwich chain is here. Other restaurants with “just good food”, Mexican or hamburgers or home cooking menus serve those in Meridian as well as those passing through. One local church serves a terrific meal when they cater the monthly Chamber of Commerce luncheon (a lot more people attend when they do).

Casual eating is redefined when one visits any of the numerous community organizations in and around Meridian that for fund raisers host fish fries, chili suppers, church dinners and other food related events year around. These are very enjoyable to attend and the friendly people welcome new comers as well as old friends.

Shopping, both for antiques as well as everyday needs, is within the community or within 40 miles of Meridian.

Clifton, 13 miles south of Meridian features the Bosque Art Center, a non-profit cultural art center. The Art Center is actually a number of venues including the Art Council, Art Club, Photography Guild, Pottery Guild and the Culinary Club. Classes are held by each on a regular basis. The jewel of the Center is the Tin Building Theatre, featuring all levels of theater activities.

Clifton is also the location of the Bosque Museum which celebrates the Norwegian heritage of the early settlers of Bosque County by showcasing numerous artifacts that once belonged to them, including jewelry, folk art, books and homemade furniture. The museum has several other

collections as well, including the Horn Shelter, an exhibit replicating the burial site of people in Bosque County over 11,000 years ago.

A most unique offering of Clifton is the Cliftex Theater. This theater has the distinction of being “Texas’ oldest, continuously operating movie theater”. When visited, whether to see an old classic or a current film, the moviegoer is whisked back 50 years (sight, smell and sound) as soon as he goes through the door.

Volunteering (Page 15) to work with the events, festivals and civic efforts allow those in Meridian with the time and interest to do so, many varied opportunities to get involved with most of the year-round activities.

Community Support:

Meridian has an active Chamber of Commerce supporting the town and its business community (www.meridian-chamber.com). Meridian also has active local chapters of the Lions Club and Masonic Lodge.

The North Bosque County Helping Hands operates a food pantry that serves the needs of northern Bosque County. BCHH is staffed completely by volunteers (about 30). They currently support an average of 150 qualified families each month.

Local public transportation (see Page 8) is available.

Senior Citizen Support:

For the older residents Meridian has a very active Senior Citizen Center which is open daily in the historic Meridian Library building, providing senior activity daily (like dominos), serving lunch on Monday – Friday (\$1.75) and providing periodic medical screening (blood pressure screening) is available.

Meridian is also the center for the Meals-on-Wheels program in northern Bosque County. The program serves meals five days a week to qualified home bound folks. The recipients are asked to contribute \$1.75 per meal but the program is free to recipients who cannot afford the contribution. The meals program is staffed by volunteers, giving the “not that old” senior another opportunity to get involved.

The local public transportation system (see Page 8) provides seniors with needed mobility, local churches have programs directed at seniors, especially women and the library provides help using its facilities and accessing the Internet.

Recreational Areas and Facilities:

Recreation is at the heart of Meridian's quality of life, for both residents and those who visit.

There are a number of ranches in the area that offer large game and game bird hunting. The area lakes offer the opportunity for fishing from a boat or from the shoreline.

Meridian State Park is located 2 miles west of Meridian – The park consists of 505 acres of park land and a 72 acre lake, cabins, RV parking as well as camping. Park activities include fishing, picnicking, hiking, lake swimming (unsupervised), boating, bird watching, fishing, bicycling on park roads or just doing nothing.

Lake Whitney State Park (at the south end of the lake) is 20 miles east of Meridian – The park is on the east shore of the 955 acre Lake Whitney and operated separately by the US Army Corps of Engineers. The state park facilities include restrooms with and without showers; picnic sites with and without shade shelters; campsites with water, with and without shade shelters; campsites (pull-through) without shade shelters, with water, electricity, and sewer; campsites (pull-through) with and without shade shelters, with water and electricity (special rates available).

Around the shore of Lake Whitney are more than a dozen parks offering vast amounts of lake orientated fun. Several have camp sites, rest room facilities, swimming beaches and boat ramps. Several offer travel trailer sites, many with electric and water hookups. The closest is the Kimball Bend Park on Highway 174 at the north end of the lake, 15 miles from Meridian.

General use facilities at Lake Whitney include a trailer dump station; a group recreation hall with a kitchen, attic fans, central heating and air-conditioning; a group camp with a dining hall and 8 screened shelters; a Texas State Park Store; a youth group area with a large fire ring and picnic tables (no drinking water or restrooms near) and a fish-cleaning facility. The park also provides a launching ramp, a playground; and 2 trails of approximately 1 mile each - one for hikers only and one multi-use trail for hikers and bicyclists.

Performing Arts:

The performing arts, in the form of theater and dance, are a significant part of what is available to Meridians. This activity is centered 13 miles away in Clifton and provides the opportunity to perform as well as just be part of the audience.

In Clifton, Tin Building Theater offers theater productions with dinner theatre as well as regular evening performances and matinees for each of their shows every season. The theater welcomes all who want to be a part of one of their productions.

Festivals and Events:

Meridian hosts several festivals and events during the year, each drawing significant out of town visitors.

Events:

Duncan Seawright Memorial Antique Tractor Show & Pull

– a county wide event held on the 2nd weekend in June on the grounds of the National Championship Barbecue Cookoff honors Meridian’s long time resident who is recognized as the father of tractor pulling in Texas. The show and pull attract tractor owners from as far away as west of Abilene.

Bosque Bottoms Fall Run – 2k and 5k runs – held the 4th weekend in October as a companion event to the National Championship Barbecue Cookoff.

Bosque Bottoms Antique Tractor Pull – held the 4th Saturday in October as a companion event to the National Championship Barbecue Cookoff’s annual invitational and also attracts “pullers” from over a hundred miles away.

Motocross Racing – a three day motocross racing event over rough open tracks is held in April, bringing a large number of competitors and spectators to the area.

Heart of Texas Barbeque Cookoff - held the 2nd Saturday in June features competitors from the local area competing for an invitation to the National Championship Barbecue Cookoff in Meridian in October with the entry fee paid.

Bosque County Go-Texan Barbecue Cookoff – held the 2nd Saturday in June along side the Heart of Texas Barbecue Cookoff features Bosque County competitors wanting to represent the county at the Houston Livestock Show Go-Texan Cookoff.

Christmas Market and Parade – a Christmas parade and market on the square in December.

Market on the Square – a series of once a month farmer’s markets setup on the square in May to October

Spring Fling – Easter egg hunt and other related events each Easter.

Festivals:

John A. Lomax Music Gathering & Chuck Wagon Cook-off – is being resurrected for 2012 after what will be a three year absence. It is a totally redesigned event and is moving from March to the 2nd weekend in April. This event, will again take on the role of “primary fundraiser” for our local historical archive, Bosque County Collections.

The Lomax Music Gathering will present “A Road Trip through the Roots of Texas Country Music” and celebrate John A. Lomax who’s very successful work preserved an untold number of cowboy songs and ballads that are known to most of us today and are the deepest roots of Texas Country Music. The music portion will feature current day performers of cowboy music, western swing, western music and honky-tonk along with poets and story tellers. The venue may also feature a Lomax mini-museum, fiddler contest, a western art auction and Cowboy Church as well as other entertainment.

The Bosque County Chuck Wagon Cook-off will be a part of the Gathering and is expected to attract a dozen authentic chuck wagons and crews from around Texas. In addition to competing with the other wagons for prize money and bragging rights, each will prepare the same food for 40 additional visitors who purchase tickets for the dinner.

National Championship Barbecue Cookoff – held the 4th weekend in October - the event in 2011 will be the twenty-fourth year, lately drawing in excess of 200 teams. Each team must have won other sanctioned events within the past year. The cookoff becomes a festival with the additions of a parade, an antique tractor pull, 5k and 2k runs, a car show, children’s activities and arts & crafts vendors.

The City of Clifton (located 13 miles away) also hosts several events and festivals each year –

Events:

Central Texas Fair & Rodeo – 1st week in June
Norwegian Country Home Tour – 1st weekend in December
Trick or Treat on Main Street – a Halloween night celebration

Festivals:

Fall Fest – kicks off the holiday season with Norwegian Country Christmas.

Volunteerism:

Volunteerism is a significant part of life of everyone in Meridian and a major support to all of events and festivals in the area. Volunteering is a most enjoyable opportunity, especially when one is volunteering to serve as “food judges”. The Barbecue Cookoff alone uses over 250 volunteers as judges plus dozens more in other capacities.

Volunteering to work with an event, North Bosque County Helping Hands food pantry or Meals-on-Wheels or the Lomax Music Gathering or helping to put on the annual Chamber of Commerce banquet is a great way for new comers to become a part of the community. It’s an ideal way for people to get involved and those who want to volunteer select their event and work through the event sponsors.

Many organizations in Meridian welcome volunteer assistance (those below) and some operate only because of their volunteers.

Antique Tractor Show and Pull
Bosque County Chuck Wagon Cookoff
Bosque County Senior Services
John A. Lomax Music Gathering
Meals-on-Wheels

Meridian Chamber of Commerce
Meridian (ISD) Band Boosters
Meridian (ISD) FFA
Meridian (ISD) Jacket Backers
Meridian Lions Club
Meridian Public Library
National Championship Barbecue Cookoff
North Bosque County Helping Hands
Senior Citizen Center

Sports (all levels):

Sports activity in Meridian is a time for the youth to perform and for the adults to cheer them on. In the fall its high school and intermediate football. In the spring its high school baseball and for the girls its softball and track for both. For the younger kids from pre-k to junior it's also softball and baseball.

Winners from these groups advance to regional and higher championship competition.

Churches:

Meridian is actively served by ten church congregations:

Apostolic Temple, 107 Hill St
Church of Christ, 1036 N. Bosque St
Cornerstone Assembly of God Church, 141 Hwy 174
Cowboy Church, 9522 Hwy 6
Faith Lutheran Church, Hwy 22 & FM 1991
First United Methodist Church, 300 N. Main St
First Baptist Church, 207 N. Hill St
Lighthouse Independent Baptist Church, 204 N. Main St
Meridian United Pentecostal Church, 714 N. Bosque St
Riverside Baptist Church, 801 E. Morgan St

Public Schools:

Meridian education is the responsibility of the Meridian Independent School district which also serves the 147 square miles around the town. The district operates an elementary school (PreK-6) and a high school (7-12).

High school students are provided opportunities to study languages, mathematics, science, social studies, fine arts, health, physical education, vocational studies, and technical literacy. Emphasis is placed on the total education of the student including responsibilities of citizenship, our American heritage, communication skills, critical thinking skills, independent and logical reasoning, and creative skills.

Both schools are in new buildings and have obtained these designations from the State Education agency: Texas Recognized District, Exemplary District (Meridian Elementary) and Blue Ribbon School.

The staff numbers 82 with an enrollment of 550 students. The teacher-student ratio is 14:1.

Information provided by the Meridian ISD

Banking:

There are three (3) banks in Meridian, all with their roots going back to banks formed in this community in past years:

First Community Bank, 200 W. Morgan St
First National Bank of Bosque County, 115 S. Main St
First Security State Bank, 9353 Hwy 6

Utilities Services:

Electric, Natural Gas, Telephone and Television Services:

These services (no cable TV) are available to persons residing in Meridian through suppliers that provide those services around the state. Rates vary and are set by each supplier.

Electric service is available from:

- Texas Electric Choice retail suppliers through Texas New Mexico Power & Light.
- United Cooperative Services

Natural gas service is provided by Atmos Energy.

Television service is from the major satellite operators.

Telephone service is available through AT&T and Embark.

Water / Sewer Service:

Community Profile – City of Meridian, Texas

The City of Meridian provides residents / businesses with drinking water from three City owned and operated wells capable of 700,000+ gallons per day. The City has recently completed the construction of a water collection system capable of diverting and processing up to 100,000 gallons per day from the Bosque River.

Residential and Commercial Service Deposits of \$200.00 is required and is refundable at service termination.

Water rates:

Residential / Commercial – cost of actual gallons used per month, plus \$9.00 surcharge, plus \$6.00 if commercial account, plus \$3.50 surcharge if address is not in the city limits.

Rate for gallons used:

0 - 2000	gallons - flat rate of \$21.50
2000 - 10000	gallons - \$4.00 for each 1000 gallons
10001 - 20000	gallons - \$4.50 for each 1000 gallons
20001 - 40000	gallons - \$5.00 for each 1000 gallons
40001 - 80000	gallons - \$5.25 for each 1000 gallons
80001+	\$5.50 for each 1000 gallons

Industrial - negotiable

Wastewater (sewer) rates:

Residential / Commercial – cost is based on the average gallons of water used during December – February x \$4.00 plus \$9.60 base charge. Average gallons determination is annual. Customers with insufficient history to set a rate are charged a minimum of \$24.60.

Multi-unit housing (when metered from a single meter) will be charged a basic monthly rate per each occupied unit.

Mobile home parks (when metered from a single meter) will be charged a basic monthly rate for all permanently fixed (for three consecutive months) dwellings.

Industrial – negotiable

Websites of Interest

Bosque County Collection (museum)	www.bosquecountycollection.com
City of Meridian	www.meridiantexas.us
Meridian Chamber of Commerce	www.meridian-chamber.com
Meridian Economic Development Corp	www.meridiantxedc.org
Meridian Independent School District	www.meridianisd.org
National Championship Barbeque Cookoff	bbq.htcomp.net

Summary

Eye catching scenery, good people, low crime, low taxes and not too far from anywhere, that's Meridian, Texas. What more could anyone need?

Meridian is becoming aware that nothing is fixed in time and that to preserve what they have, what they enjoy so much, they must carefully manage change. The citizens are beginning to do just that. They are working to improve the town's infrastructure as well as its image. They are beginning to address the town's needs as well as publicize its assets.

This document gives significant insight into most of the definable factors affecting life in Meridian. What's left is to visit and see for ones self those things that words do not define in a way that's truly real. Meridian is not yet all things to all people but they're working on it. Come see for yourself.

Appendix A

Brief History of Meridian



OLD COURTHOUSE



TURNER DRUG STORE



TENNISON LIVERY

Telling the story of Meridian is also the telling of some of the history of the beginning of the county.

An area known as Bosque Territory along the northwestern part of McLennan County was part of the Western frontier. Few settlers lived in this area but in the winter of 1853-1854 those that did signed a petition asking the legislature of the State of Texas to create a new county.

Members of the legislature, during the fifth session, submitted legislation to establish the county of Bosque. The legislation passed on February 4, 1854. During that same session the legislature appointed William Gary, T. E. Everett, William A. McCurry, John Locker, Lowry S. Scrutchfield and Jasper Mabray as commissioners, to serve until the first regular elections could be held. They were given the specific duties to locate the county seat as near to the center of the county as possible and to purchase of otherwise receive land for use by the county. The commissioners met on June 27, 1854 and accepted the offer of Dr. Josephus M. Steiner of 100 acres and of J. P. Eubanks of 25 acres. The land was surveyed by George B. Erath and the county seat with the name Meridian was created.

The name of Meridian was suggested by Jasper N. Mabray, most likely for the predominant local land features, Meridian Creek and Meridian Knobs. The town and these land features are all located close to the ninety-eighth meridian which touches the northwestern corner of the county.

A sale of town lots was held on July 4, 1854 and by the fall of that year William McCurry had built a one-room log courthouse. A square was set aside as the future location of a courthouse and businesses were being built around it. The log courthouse was used until 1859 when a three-room courthouse was built on the northeast



TURNER DRUG STORE



MERIDIAN COLLEGE



DOWNTOWN MERIDIAN



DR. ALEXANDER HOME

corner of the square.

The first sermon preached in Meridian was in the log house built by J. N. Mabry in 1854. The first county post office in Meridian was established by Postmaster Joseph W. Smith in 1856. The first jail was a log structure built in winter of 1856-1857. During the Civil War the first newspaper was published.

With the onset of the Civil War a number of men from Bosque enlisted but most of them chose to serve in the Frontier Regiment which patrolled the west and northwest area. Times were hard on the people during the war and the subsequent period of military rule which lasted for ten years.

The three-room courthouse was destroyed by fire in 1871. The people built a room for the county and district clerks in 1872 but five years elapsed before a new courthouse was built. In 1875 a two story rock courthouse was built in the middle of the square.

The town continued to grow and had become the location of many businesses. In 1874 the town of Meridian was officially incorporated. In 1881 the Gulf, Colorado and Santa Fe Railroad was laid through Bosque County, coming within about one and one half miles (east) of the town. Even though it was inconvenient the town did not, like many others, move to the railroad.

The town and the county continued to grow and in 1886 the citizens voted to establish a mayor-council form of government for Meridian. In that year the citizens also voted to establish their own school district. Meridian College was also opened and continued until 1937 - from 1913 - 1927 operating as a junior college.

The present courthouse was built in 1886. It served as it was built until 1932 when, because of identified structural weaknesses, the clock tower and the cupolas were removed. The courthouse remained this way until 2004 when a grant application for a total restoration was approved. Working with the Texas Historical Commission



MERIDIAN HOUSES



MERIDIAN SCHOOL

the county undertook a total restoration. The beautifully restored courthouse was dedicated in October 2007. Meridian and Bosque are justifiably proud of their new old courthouse.

One of the most significant early residents of Bosque County and of Meridian was John A. Lomax. Mr. Lomax came to Bosque County at the age of two (1869), grew up on the family farm, went to college then became a teacher. Always with a burning desire to improve himself, Mr. Lomax continued his education and in 1906 he had the opportunity to study American folklore. This inspired him and in 1907 he resurrected his childhood passion for collecting cowboy songs and ballads. In 1910 his first collection was published. He continued his collections and through his efforts he became a nationally known figure and preserved much of the cowboy culture. John Lomax's greatest achievement may have been the collection of more than ten thousand recordings for the Archive of American Folk Song at the Library of Congress.

A more recent resident of Meridian who made important contributions to our history was local pharmacist Duncan Seawright. In 1961 Mr. Seawright began collecting old engines, tractors and other related machinery which over the years lead others to work at preserving this unique part of our history. The first organized showing in Texas of these antiques occurred in 1971 on Mr. Seawright's farm just outside of Meridian. The showing and "pull" competition that is now common across the state looks back at their roots in Meridian. Meridian did it's own resurrecting in June of this year, bringing Mr. Seawright's beloved hobby back his home town as the Duncan Seawright Memorial Antique Tractor Show and Pull.

This brief history of Meridian and of Bosque County was developed primarily from data maintained by the Bosque County Collections. The pictures on these two pages were obtained from and included with their permission. Additional information is available via their website at www.bosquecountycollection.org.

Appendix B

Business Community Make-up

Meridian's business community consists of the following types of retail:

Antique Store	3
Auto Parts Store	1
Auto Repair	2
Auto Transmission Repair	1
Auto Tire and Service	2
Bar / Restaurant	1
Beauty Salon	3
Computer Service	1
Convenience Store / Gas	3
Donut Shop	1
Feed Mill	1
Feed Store	2
Florist and Gifts	1
General Merchandise Store	2
Gift Shop	3
Grocery Store	1
Hardware Store	1
Motorcycle / ATV Sales	1
Personal Loans	1
Pharmacy	1
Restaurant	7
Video Rental	1
Wood Products (Cedar)	2

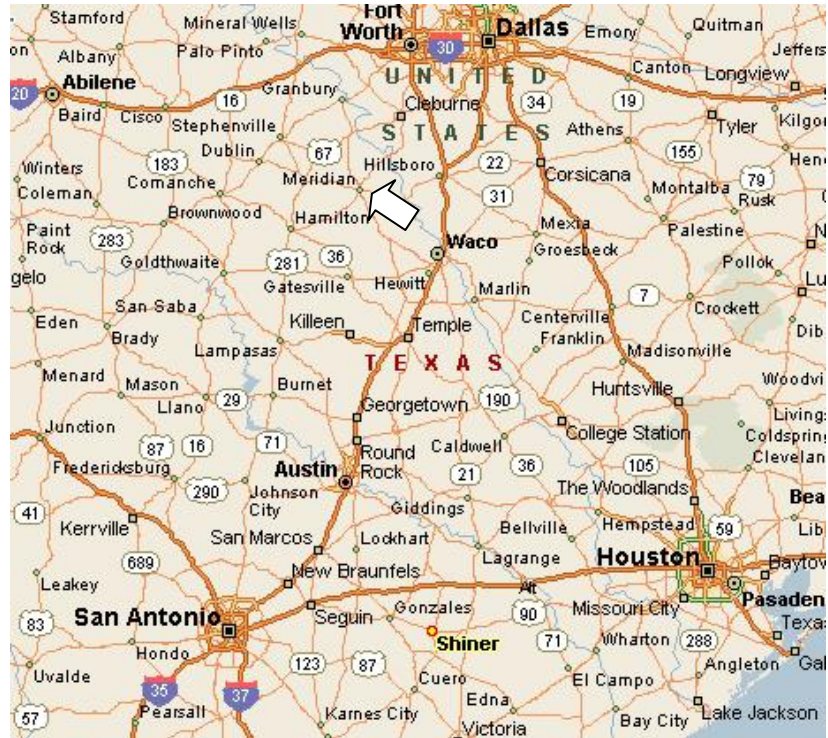
Meridian's business community also consists of the following types of service firms:

Accounting Services	1
Animal Feed Processor	1
Attorney	3
Bank	3
Bed and Breakfast	2
Counseling Service	1
Dentist	1
Electrical Contractor	1
Eye Clinic	1
Financial Services	1
Funeral Home	1
Fence Construction	2
General Contractors	3
Hand Held Food Processor	1
Insurances Services	3
Livestock Sale Barn	1
Locker Plant	1
Motel	1
Motorcycle / ATV Service	1
Nursing Home	1
Newspaper	1
Real Estate	2
Septic Service	1
Title Services	1
Trash Dumpster Refurb / Build	1
Veterinarian	2
Winery	1

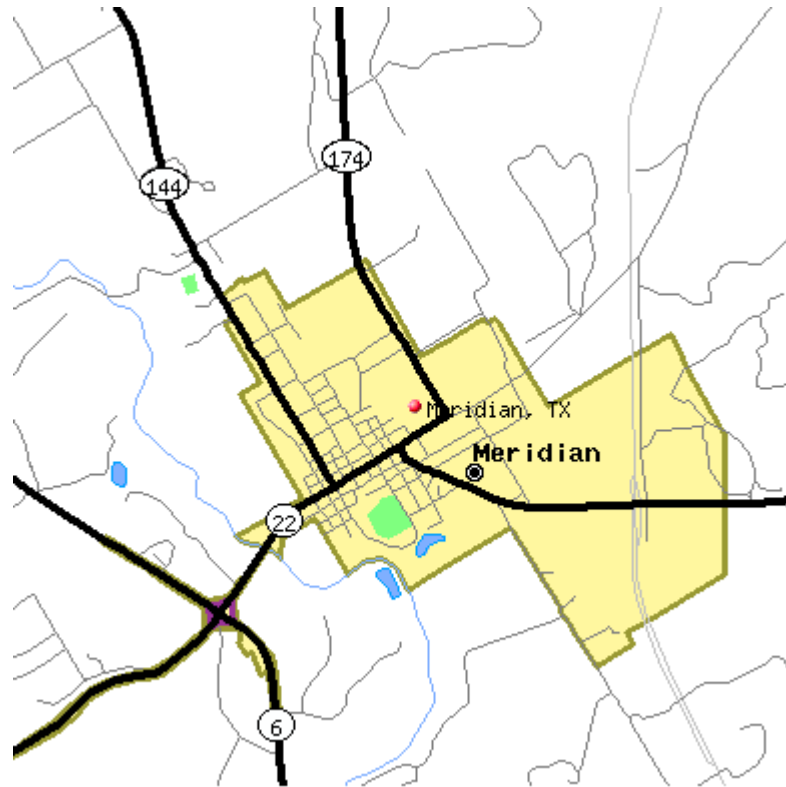
Appendix C

Maps

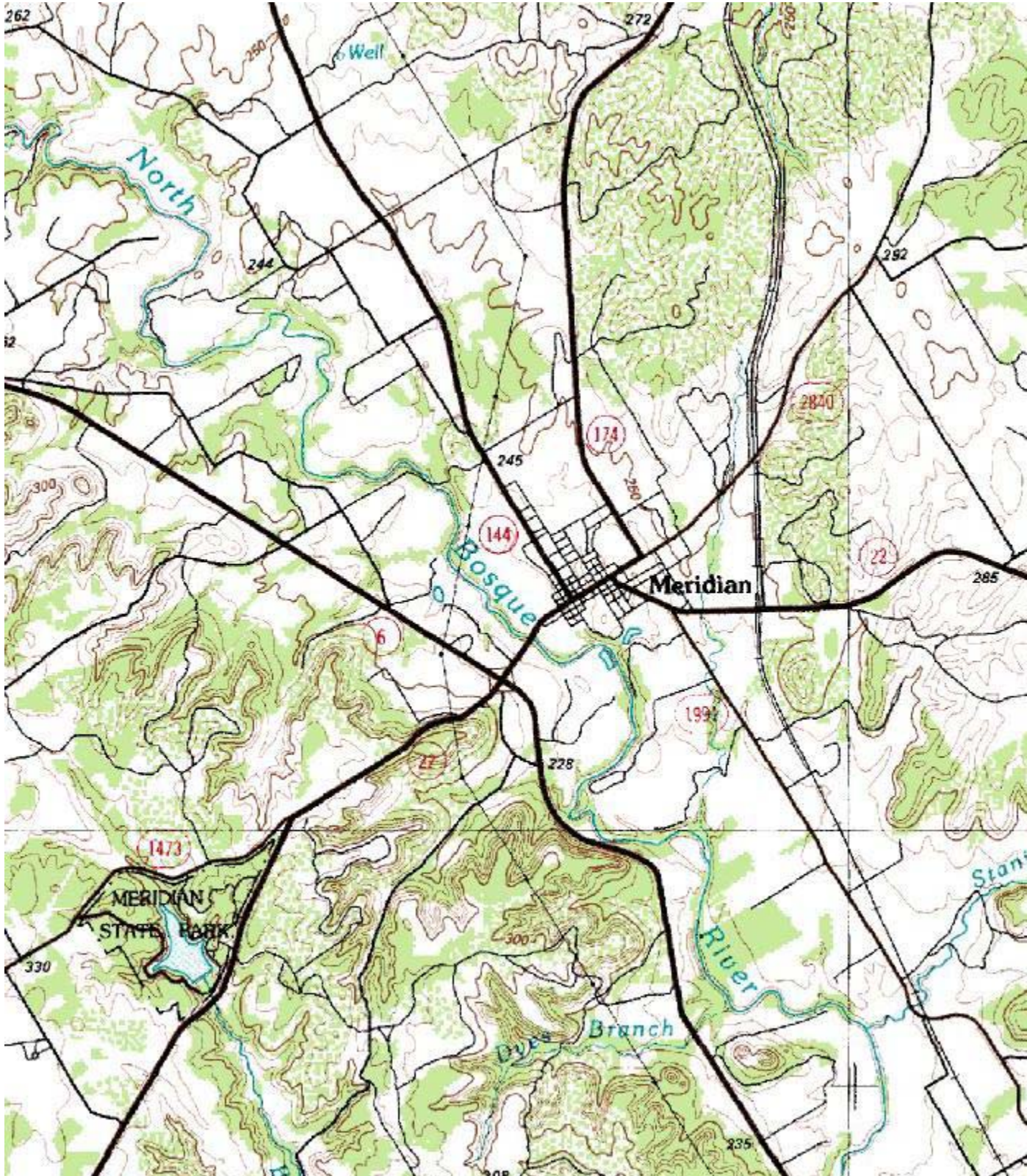
Wide Area Map:



City Map:



Meridian Area Map:



For further information about Meridian Texas contact:

David Duke - Economic Development Director

Meridian Economic Development Corporation

111 North Main Street, POB 306

Meridian, TX 76665

254-978-0515

www.meridiantxedc.org